

PART OF THE S.E. 1/4, SEC. 11, T.6N., R.2W., S.L.B. & M.  
**GRASSLANDS ESTATES SUBDIVISION**

IN WEBER COUNTY

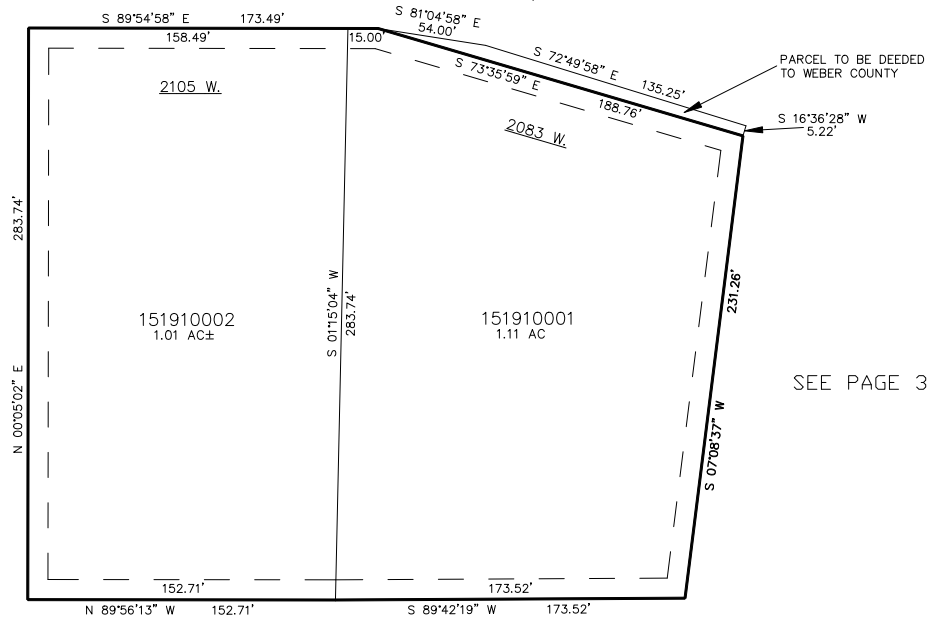
TAXING UNIT: 16

SCALE 1" = 50'

SEE PAGE 30-2

250 NORTH STREET

SEE PAGE 30-2



SEE PAGE 30-2

SEE PAGE 30-2

10' UTILITY & DRAINAGE EASEMENTS EACH  
SIDE OF PROPERTY LINES AS INDICATED  
BY DASHED LINES EXCEPT AS OTHERWISE  
SHOWN.

FOR COMPLETE ENG DATA SEE  
ORIGINAL DEDICATION PLAT IN  
BOOK 38, PAGE 84 OF RECORDS.